



Evaluation Framework for Promoting Gender Equality in Research and Innovation

Policy Learning International Workshop
13th November 2018, Barcelona

Susanne Bühner

This project has received funding from the European Union's Horizon 2020 research and innovation programme under grant agreement No 710470



Fraunhofer Center for Responsible
Research and Innovation



Background and Motivation



■ Background

- H2020 project EFFORTI (Evaluation Framework for Promoting Gender Equality in Research and Innovation), funded under SWAFS (Science with and for Society)
- Duration: June 2016 until May 2019
- Six Partners:



Background and Motivation



■ Motivation

- Gender equality (GE) is one of the top priorities since decades
- The scientific knowledge of the underrepresentation of women within R&I systems and the most important hindrances are comprehensive
- A plenty of measures and toolkits exist that aim at the promotion of GE regarding the ERA objectives (e.g. GENDER-NET IGAR tool 2009, EIGE GEAR tool 2016, GARCIA tool 2015)
- But: Progress is made at a rather low pace

➡ More evidence is needed that diverse perspectives lead to more responsible R&I

➡ EFFORTI aims to deliver such evidence by developing an evaluation framework which establishes the link between Responsible R&I and Gender Equality

Background and Motivation



Generation of knowledge on

- the link between GE measures GE outputs and R&I outcomes and impacts
- with a special emphasis on innovative indicators like RRI

Tools & Products

- Conceptual Evaluation Model (EFFORTI 1.0)
- Evaluation Toolbox (EFFORTI 2.0)

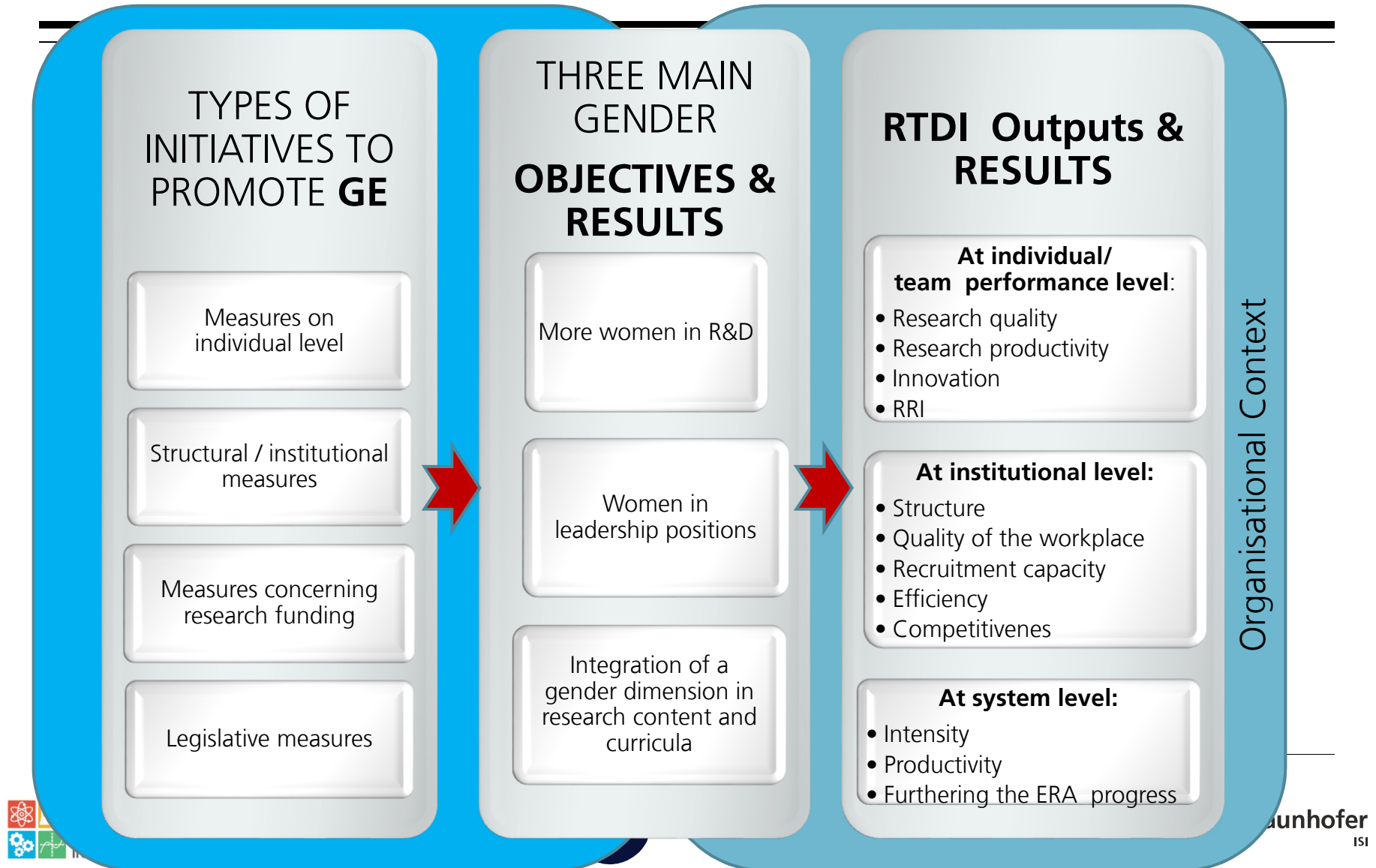
Community Building

- National Stakeholder Workshops
- International Conferences
- Platform for information sharing

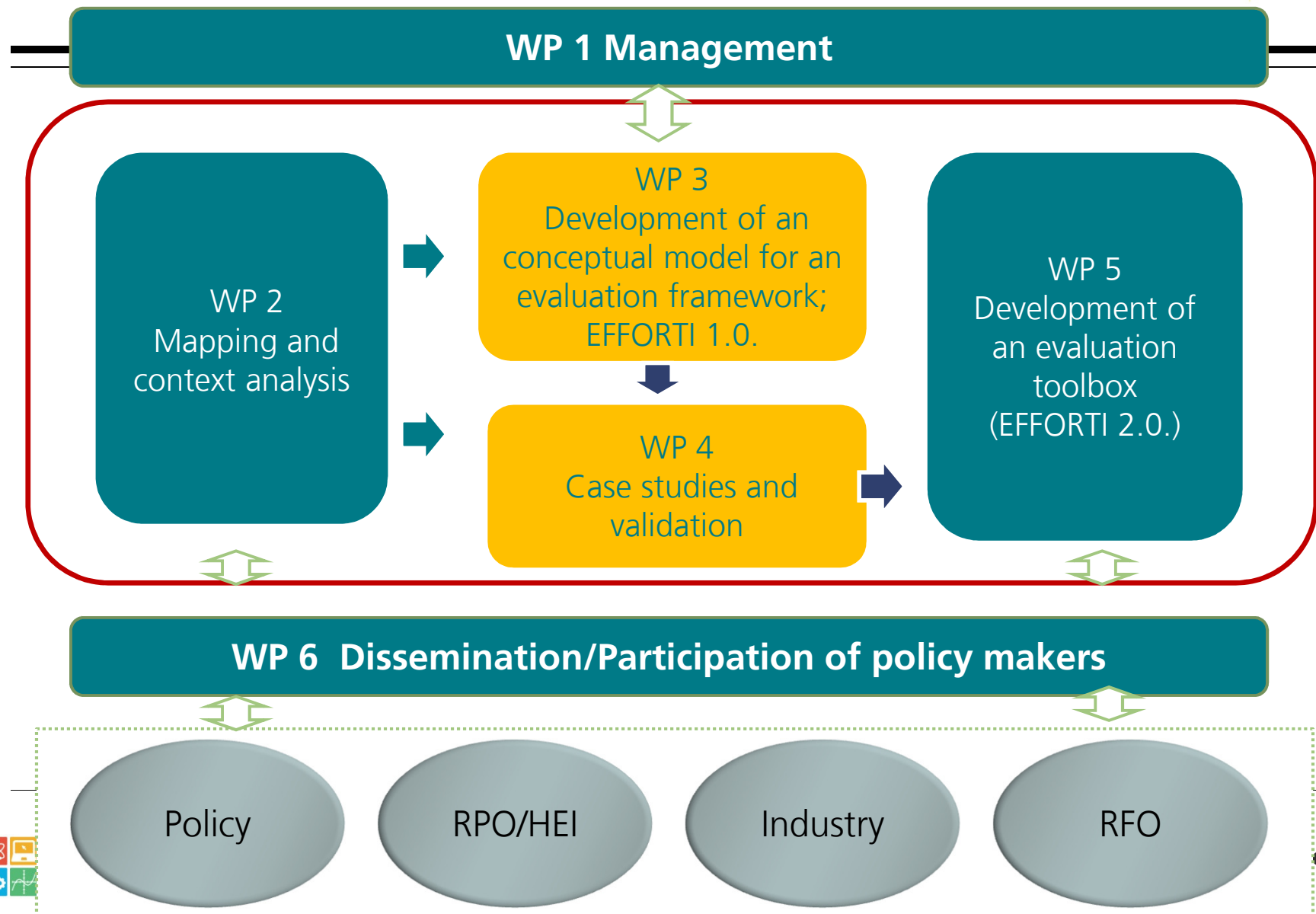
Policy Making

- Improvement of Measures
- Improvement of Evaluations
- Improvement of RTDI outcomes

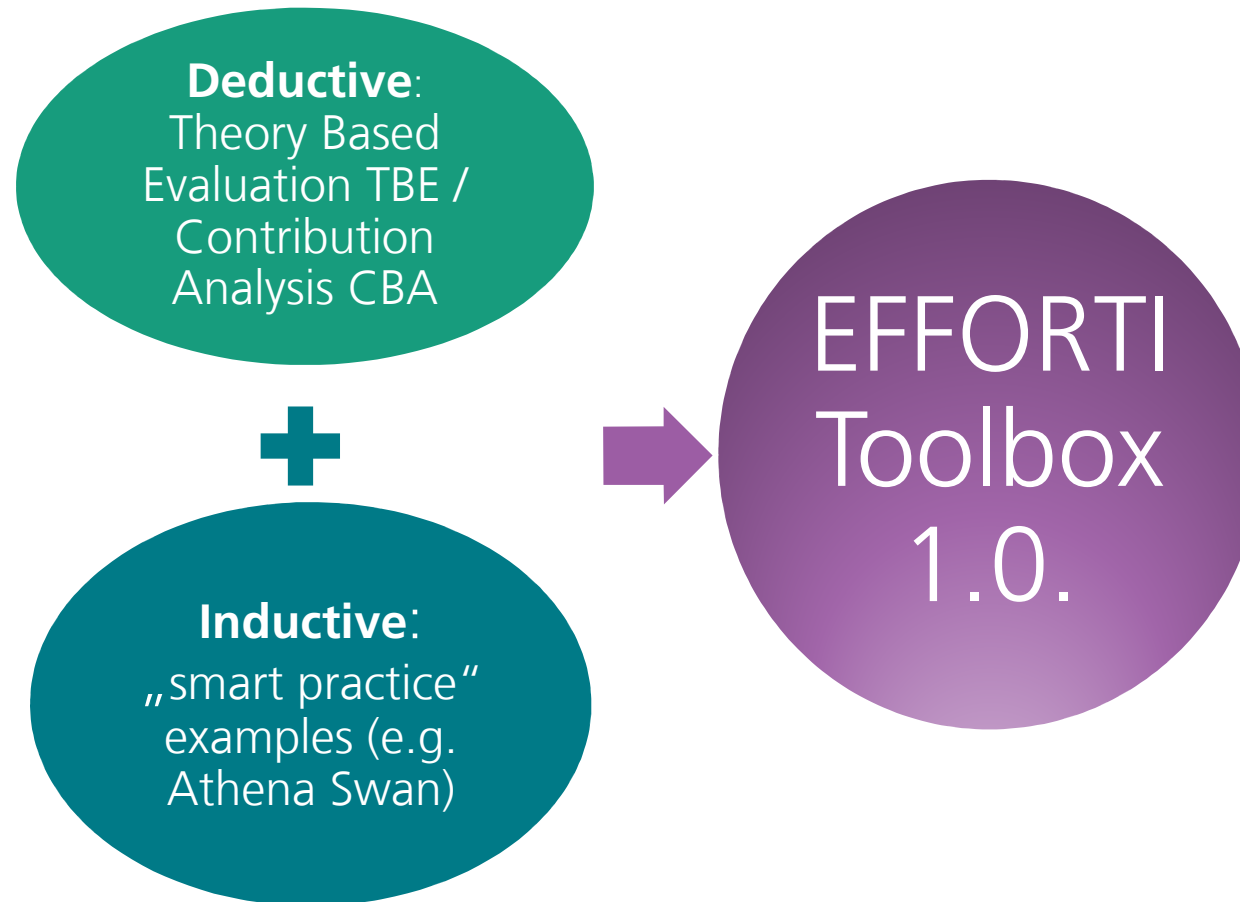
The EFFORTI Core Model



Work Packages



The Evaluation Approach



Central Aspects of TBE



Central Aspects

Intervention Theory = action and change theories: implicit or explicit assumptions how and why an intervention should work (impact pathways and mechanism)

Contribution instead of attribution

Two main components

- **Conceptional component:** design of a programme theory / theory of change
- **Empirical investigation** of the programme / intervention theory

Quelle: Eigendarstellung, basierend auf "European Commission (2013): und Leeuw (20129

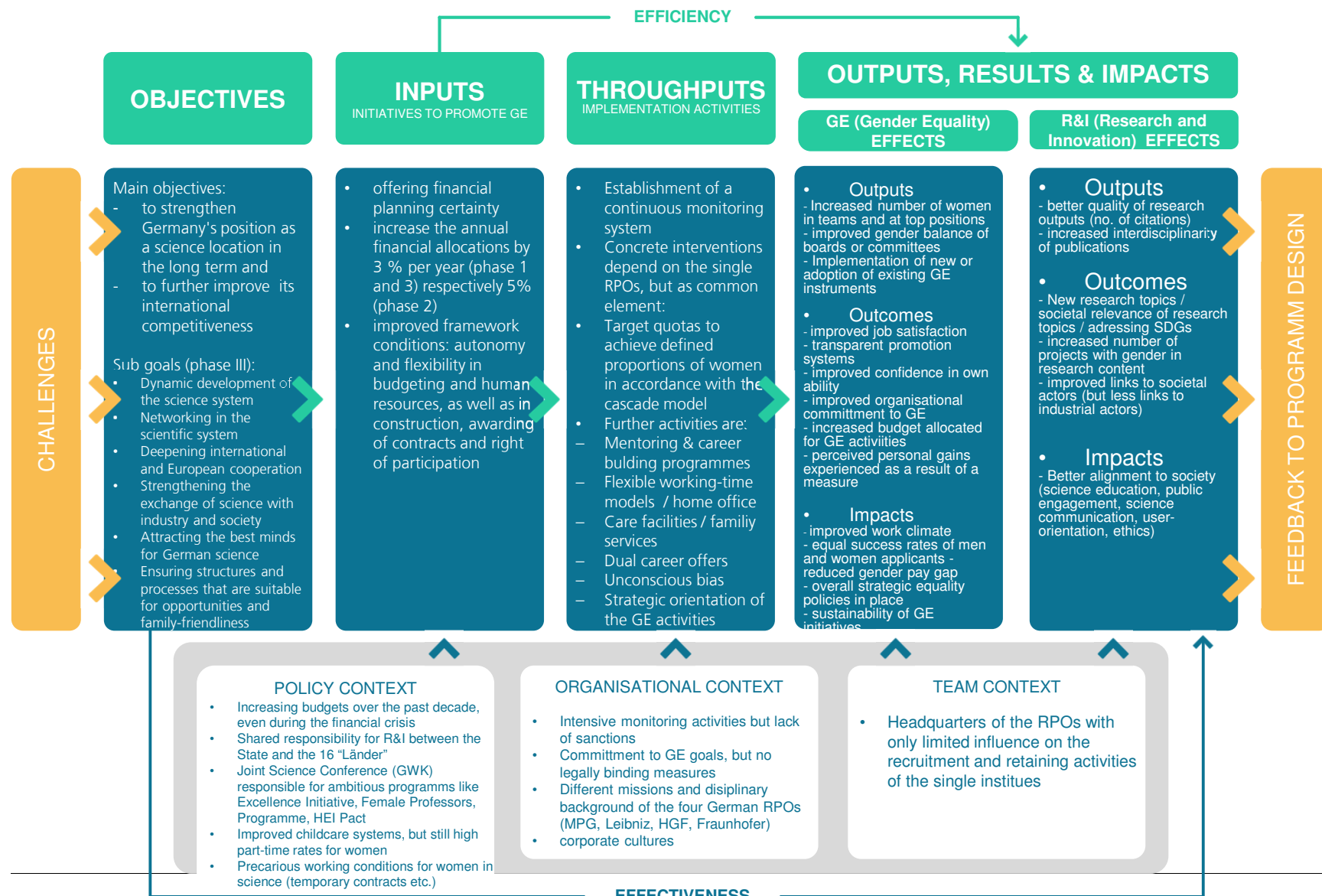
Empirical investigation of the intervention theory

TBE typically applies a variety of **qualitative** and **quantitative** methods

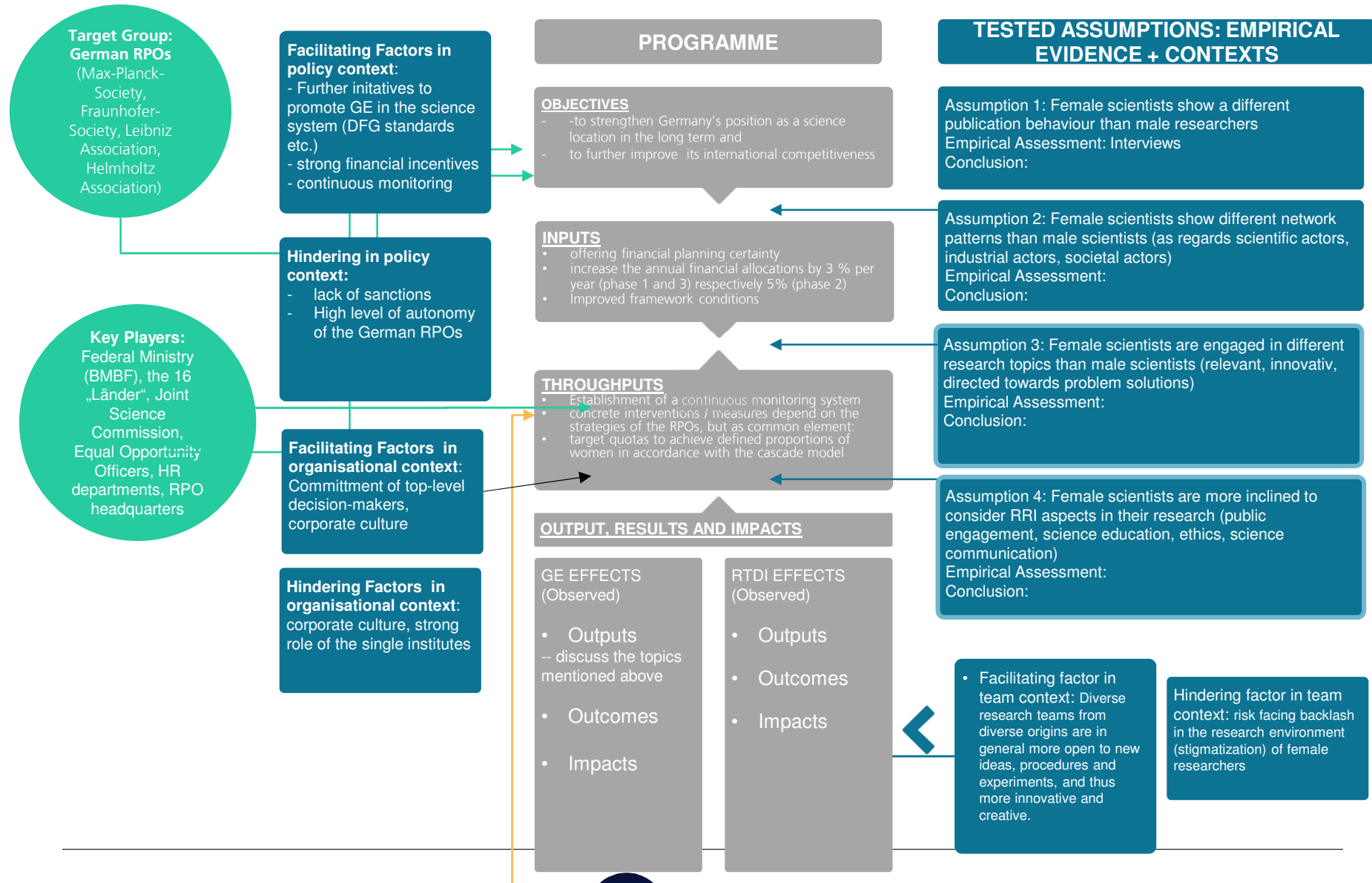
Useful approaches for a TBE:

- **Contribution Analysis (CA)**
- Casual Process Tracing (CPT)
- Congruence Analysis (CON)

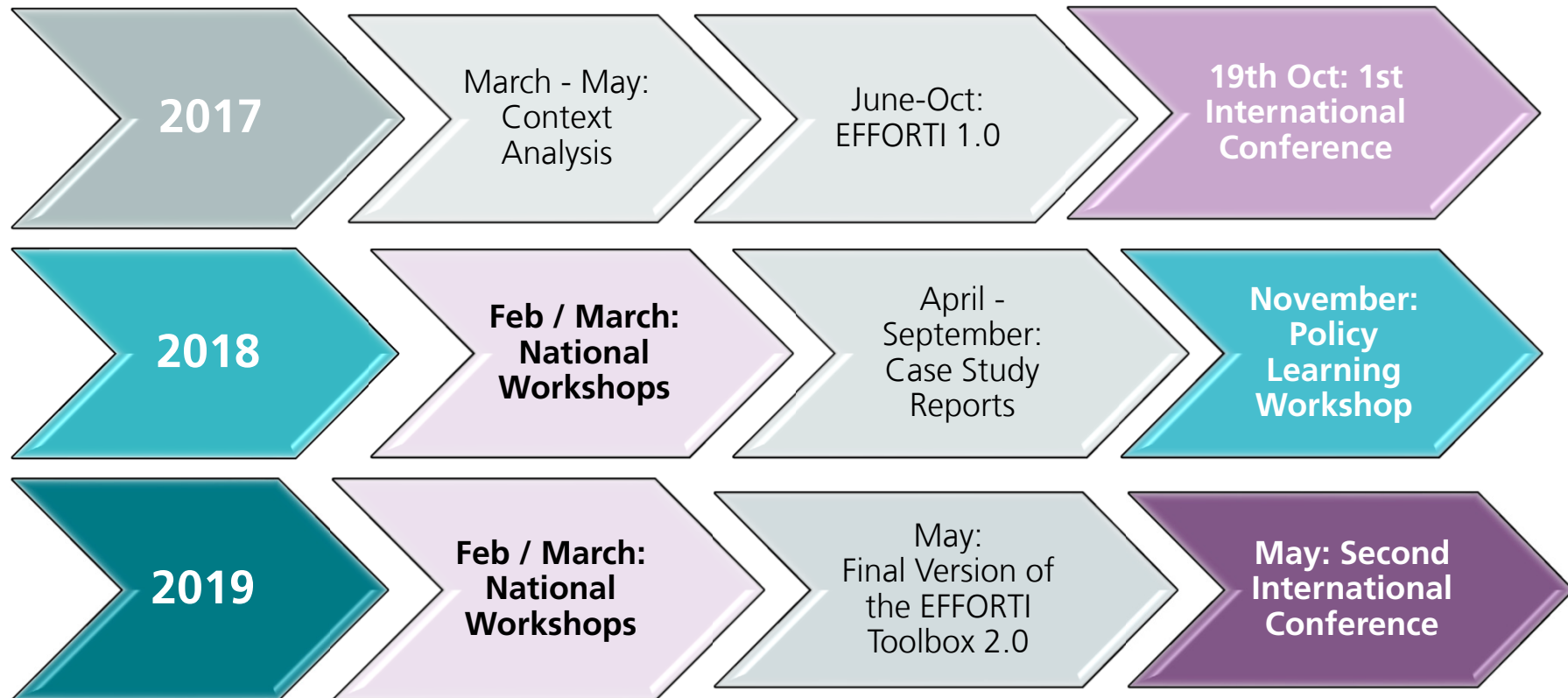
CASE STUDY WORK: LOG FRAME Example



EFFORTI CASE STUDY WORK: THEORY OF CHANGE Example



Timetable



Thank you very much
for your attention!

www.efforti.eu